

ASM Maxi Poles

312483B

For the application of architectural paints and coatings.

3400 Series

4050 psi (27.92 MPa, 280 bar) Maximum Working Pressure

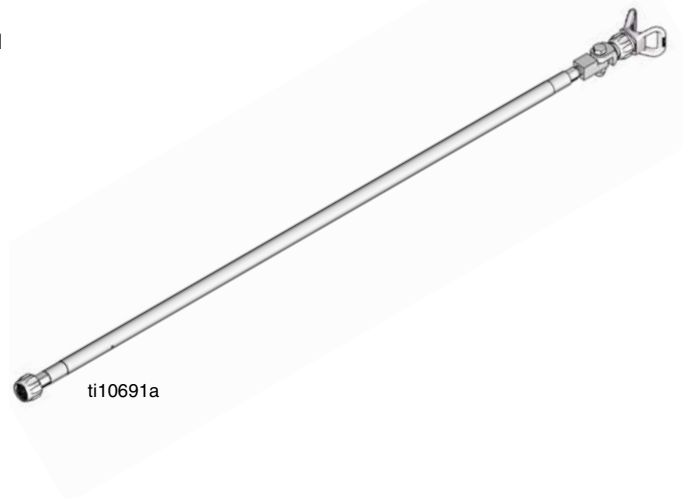


Important Safety Instructions

Read all warnings and instructions in this manual and in your separate gun manual. Save these instructions.

See page 2 for model information.

See 312482 for ASM Mini Poles.



Models

Maxi Poles

Hand-Tight system allows for easy attachment to gun without tools. Hand-Tight Maxi Poles accept Hand-Tight adapters and an additional Maxi Pole or Mini Pole for 12 ft maximum length.

When ordering, specify gun adapter required: “G” for Graco, “F” for ASM.

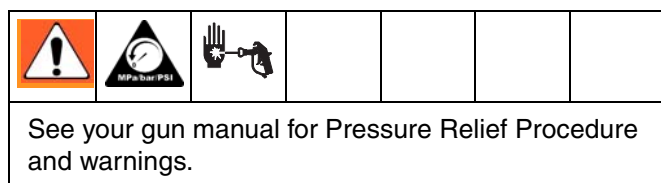
Part No.	Description	Series	Uni-Tip Hand-Tight Base	Super-Zip Hand-Tight Base	AngleHead Assembly	G Thread	F Thread
248242	2 ft (60.96 cm), with sst fittings	3400	✓		7506AG	248200	
248243	3 ft (91.4 cm), with sst fittings	3400	✓		7506AG	248200	
248244	4 ft (121.9 cm), with sst fittings	3400	✓		7506AG	248200	
248245	6 ft (182.9 cm), with sst fittings	3400	✓		7506AG	248200	
7402-SF	2 ft (60.96 cm), with sst fittings	3400		✓	7506A		5901-F
7402-SG	2 ft (60.96 cm), with sst fittings	3400		✓	7506AG	5901-G	
7403-SF	3 ft (91.4 cm), with sst fittings	3400		✓	7506A		5901-F
7403-SG	3 ft (91.4 cm), with sst fittings	3400		✓	7506AG	5901-G	
7404-SF	4 ft (121.9 cm), with sst fittings	3400		✓	7506A		5901-F
7404-SG	4 ft (121.9 cm), with sst fittings	3400		✓	7506AG	5901-G	
7406-SF	6 ft (182.9 cm), with sst fittings	3400		✓	7506A		5901-F
7406-SG	6 ft (182.9 cm), with sst fittings	3400		✓	7506AG	5901-G	
7302-F	2 ft (60.96 cm), with carbon steel fittings				7506A 7506AG		420-F
7302-G	2 ft (60.96 cm), with carbon steel fittings				7506A 7506AG	420-G	
7303-F	3 ft maxi pole assembly, with carbon steel fittings				7506A 7506AG		420-F
7303-G	3 ft maxi pole assembly, with carbon steel fittings				7506A 7506AG	420-G	
7304-F	4 ft (121.9 cm), with carbon steel fittings				7506A 7506AG		420-F
7304-G	4 ft (121.9 cm), with carbon steel fittings				7506A 7506AG	420-G	
7306-F	6 ft maxi pole assembly, with carbon steel fittings				7506A 7506AG		420-F
7306-G	6 ft maxi pole assembly, with carbon steel fittings				7506A 7506AG	420-G	
7309-F	9 ft maxi pole assembly, with carbon steel fittings				7506A 7506AG		420-F
7309-G	9 ft maxi pole assembly, with carbon steel fittings				7506A 7506AG	420-G	

Angle Head


Swivels to 90° for easy spraying of challenging areas.

Part No.	Description	Uni-Tip Hand-Tight Base	Super-Zip Hand-Tight Base
7506A	"F" thread		
7506AG	"G" thread; no base included		
248247	"G" thread only	✓	
7506-SF	"F" thread		✓
7506-SG	"G" thread		✓
7551-G	Pole gun adapter (Hand-Tight)		
7551-F	Pole gun adapter (Hand-Tight)		
7556-G	Pole gun adapter (Wrench-Tight)		
7556-F	Pole gun adapter (Wrench-Tight)		

Installation



1. Relieve pressure.
2. Apply anaerobic sealant to pole adapter thread (2) and screw into pole (3).
3. Press seat (6) and gasket (5) in tip guard (7) and assemble to AngleHead adapter (1).
4. Connect AngleHead adapter (1) to pole (3).
5. Press seat (7) and gasket (6) in adapter (4).

 Hand-Tight Maxi Poles accept Hand-Tight adapters and an additional Maxi Pole or Mini Pole for 12 ft maximum length.

6. See your gun manual for spraying techniques and operating procedures.

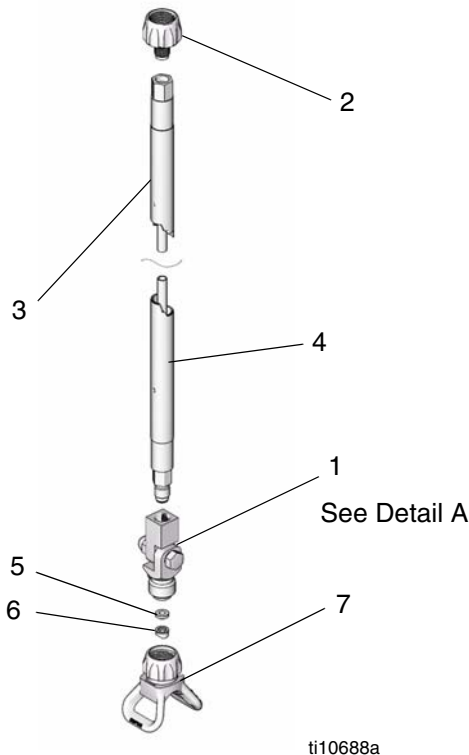
Maintenance

1. Relieve pressure.
2. Remove AngleHead adapter (1), gasket (5), seat (6), and guard tip (7) from pole.
3. Disconnect mini pole (3) from gun and remove pole adapter (2).
4. Clean and inspect parts for wear or damage and reassemble.

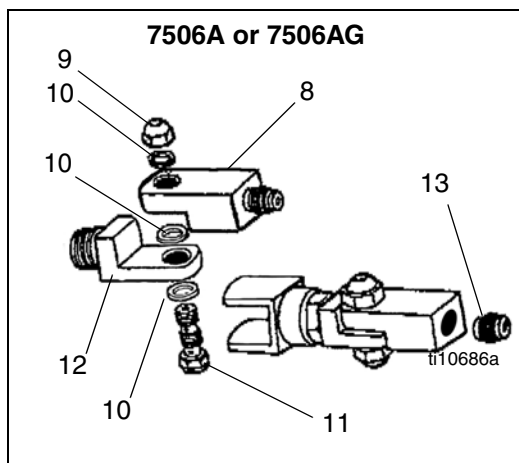
Parts

Maxi Pole

Model 248243 shown



Detail A



Ref. No.	Part No.	Description	Qty.
1		FITTING, AngleHead; includes 5, 6, 8-13	1
	7506AG	FITTING, AngleHead; G Thread	
	7506A	FITTING, AngleHead; F Thread	
2		ADAPTER, pole, gun	1
	7551-G	ADAPTER, pole, ht gun; G thread	
	7551-F	ADAPTER, pole, ht gun; F thread	
	7556-G	ADAPTER, pole, wt gun; G thread	
	7556-F	ADAPTER, pole, wt gun; F thread	
3		TUBE, maxi, pole	1
	7322	TUBE, 2 ft. maxi, pole	
	7323	TUBE, 3 ft. maxi, pole	
	7324	TUBE, 4 ft. maxi, pole	
	7326	TUBE, 6 ft. maxi, pole	
	7329	TUBE, 9 ft. maxi, pole	
	7422	TUBE, 2 ft. maxi, pole	
	7423	TUBE, 3 ft. maxi, pole	
	7424	TUBE, 4 ft. maxi, pole	
	7426	TUBE, 6 ft. maxi, pole	
	7429	TUBE, 9 ft. maxi, pole	
4▲	195804	LABEL, warning	1
5*		GASKET, tip	1
	115524	GASKET, uni-tip	
	401	GASKET, flat tip	
6*	195558	SEAT, cylinder, uni-tip	1
7		GUARD	1
	248200	GUARD, uni-tip, "G"	
	5901-G	GUARD, super zip, "G"	
	5901-F	GUARD, super zip, "F"	
	420-G	GUARD, flat tip, "G"	
	420-F	GUARD, flat tip, "F"	
8	7507	BASE, AngleHead	1
9	7502	LOCKNUT	1
10	7503	O-RING	3
11	7504	BOLT, AngleHead	1
12	7505	ADAPTER, tip, AngleHead	1
13	7315	UNION	1
14	5907	KIT, accessory, seal, super zip	1

▲ Replacement Danger and Warning labels, tags, and cards are available at no cost.

* Included in 5 pack Uni-Zip Gasket Kit 248228 (purchase separately).

See pages 2-3 for maxi pole models and adapters.

Technical Data

Wetted parts: carbon steel, sst

ASM Standard Warranty

ASM warrants all equipment referenced in this document which is manufactured by ASM and bearing its name to be free from defects in material and workmanship on the date of sale to the original purchaser for use. With the exception of any special, extended, or limited warranty published by ASM, ASM will, for a period of twelve months from the date of sale, repair or replace any part of the equipment determined by ASM to be defective. This warranty applies only when the equipment is installed, operated and maintained in accordance with ASM's written recommendations.

This warranty does not cover, and ASM shall not be liable for general wear and tear, or any malfunction, damage or wear caused by faulty installation, misapplication, abrasion, corrosion, inadequate or improper maintenance, negligence, accident, tampering, or substitution of non-ASM component parts. Nor shall ASM be liable for malfunction, damage or wear caused by the incompatibility of ASM equipment with structures, accessories, equipment or materials not supplied by ASM, or the improper design, manufacture, installation, operation or maintenance of structures, accessories, equipment or materials not supplied by ASM.

This warranty is conditioned upon the prepaid return of the equipment claimed to be defective to an authorized ASM distributor for verification of the claimed defect. If the claimed defect is verified, ASM will repair or replace free of charge any defective parts. The equipment will be returned to the original purchaser transportation prepaid. If inspection of the equipment does not disclose any defect in material or workmanship, repairs will be made at a reasonable charge, which charges may include the costs of parts, labor, and transportation.

THIS WARRANTY IS EXCLUSIVE, AND IS IN LIEU OF ANY OTHER WARRANTIES, EXPRESS OR IMPLIED, INCLUDING BUT NOT LIMITED TO WARRANTY OF MERCHANTABILITY OR WARRANTY OF FITNESS FOR A PARTICULAR PURPOSE.

ASM's sole obligation and buyer's sole remedy for any breach of warranty shall be as set forth above. The buyer agrees that no other remedy (including, but not limited to, incidental or consequential damages for lost profits, lost sales, injury to person or property, or any other incidental or consequential loss) shall be available.

ASM MAKES NO WARRANTY, AND DISCLAIMS ALL IMPLIED WARRANTIES OF MERCHANTABILITY AND FITNESS FOR A PARTICULAR PURPOSE, IN CONNECTION WITH ACCESSORIES, EQUIPMENT, MATERIALS OR COMPONENTS SOLD BUT NOT MANUFACTURED BY ASM. These items sold, but not manufactured by ASM (such as electric motors, switches, hose, etc.), are subject to the warranty, if any, of their manufacturer. ASM will provide purchaser with reasonable assistance in making any claim for breach of these warranties.

In no event will ASM be liable for indirect, incidental, special or consequential damages resulting from ASM supplying equipment hereunder, or the furnishing, performance, or use of any products or other goods sold hereto, whether due to a breach of contract, breach of warranty, the negligence of ASM, or otherwise.

FOR ASM BRAZILIAN/CANADIAN/COLUMBIAN CUSTOMERS

The Parties acknowledge that they have required that the present document, as well as all documents, notices and legal proceedings entered into, given or instituted pursuant hereto or relating directly or indirectly hereto, be drawn up in English.

TO PLACE AN ORDER OR FOR SERVICE, contact your ASM distributor,
or call 1-800-854-4025 to identify the nearest distributor.

*All written and visual data contained in this document reflects the latest product information available at the time of publication.
ASM reserves the right to make changes at any time without notice.*

This manual contains English. MM 312483

**ASM Company, 3500 N. 1st Avenue, Sioux Falls, SD 57104
www.asmcompany.com**

03/2008