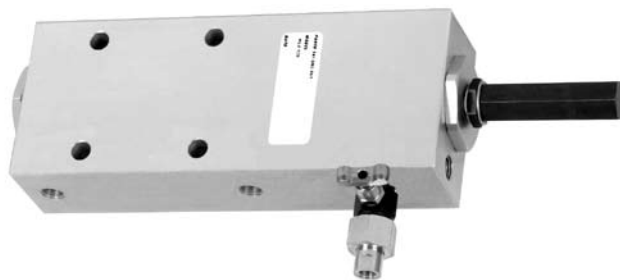


# HLJ-100A Pump

## DESCRIPTION

The HLJ-100A Pump is a double-acting pump designed for automatic lubrication of machinery where 200 to 850 psi (14 to 59 bar) hydraulic power is available. With the capability to pump both oil and grease, it can be used in a wide range of applications, including small to medium-sized machines, machine tools, large on-and off-highway trucks and construction equipment.



## FEATURES

- Blowout disc relieves high pressure and protects the system. Standard disc is yellow (1,450 psi).
- Oil/grease capability increases application possibilities and reduces inventory requirements.
- Air-bleed cock allows purging of air at pump to aid in priming.
- Choice of reservoir sizes and material helps meet a variety of application needs.
- Slotted adjustment screw enables easy setting of the lube stroke for higher or lower pump volume.
- Mounting flexibility permits the lube inlet to be located on the top or bottom.

## OPTIONS

The following features are not installed on the pump, but can be ordered as optional line items.

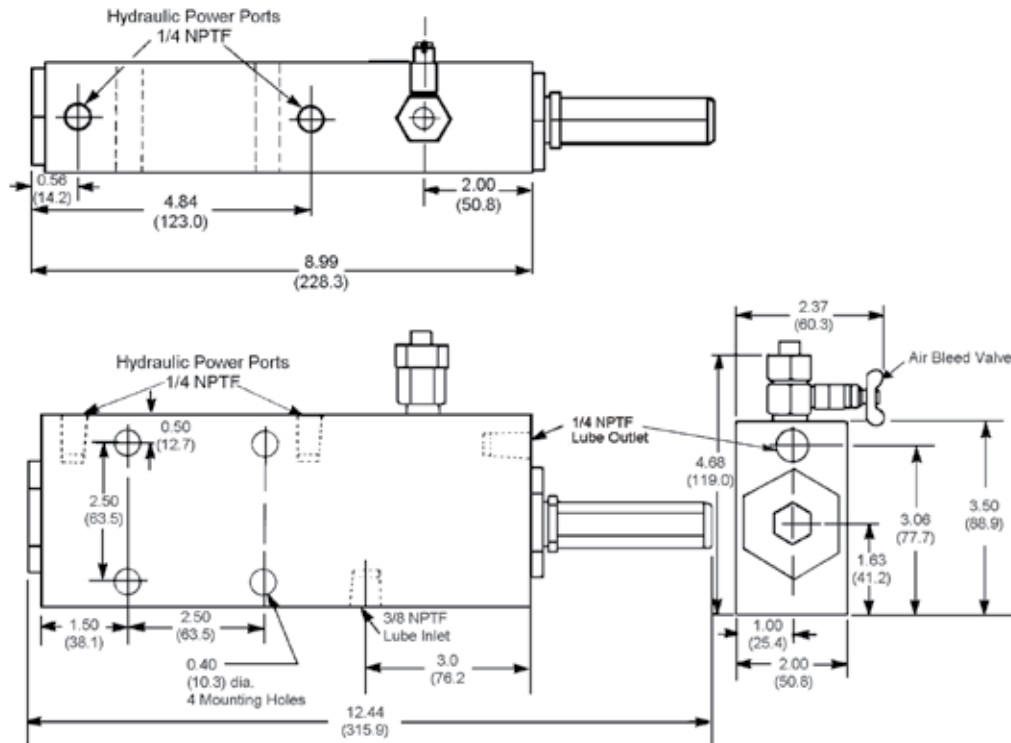
- An additional external check valve installed at the pump outlet will protect the pump against contaminants and back-pressure conditions.
- A high pressure switch can be installed at the outlet port to activate a fault light or audible alarm when a high pressure condition occurs.
- A pressure relief valve protects the system from high pressure without having to replace ruptured discs.
- 0 - 3,000 psi (207 bar) pressure gauge can be placed at the main outlet to monitor output pressure.

## OPERATION

The HLJ-100A Pump can be installed with the lube inlet on the top or bottom. Air is purged from the reservoir to the pump line. An air-bleed cock permits purging of the air and checking of the pump operation. A slotted adjustment screw is used to change the lube stroke for higher or lower volumes. To decrease pump volume, the screw is turned in. A calibrated cap at the lubricant end of the pump covers and protects this adjustment screw as well as providing a means for gaging the output adjustment. Markings on the cap shows the approximate lube discharge at setting.

The pump is equipped with a blowout disc to protect the system in case high pressure is detected. An optional pressure relief valve can be installed to protect the system from high pressure without replacing ruptured discs.

## DIMENSIONS Inches (mm)



| SPECIFICATION   |   |
|---|---|
| <b>Materials</b>  | Aluminum body with steel component parts and Buna-N + Viton O-Rings and Gaskets |
| <b>Standard (orange disc) Relief Pressure*</b>  | 2050 psi (141 bar)  |
| <b>Ratio of Lube to Hydraulic Pressure</b>  | 3.5:1   |
| <b>Max Input Pressure</b>   | 850 psi (59 bar)  |
| <b>Max Operating Pressure</b>   | 3000 psi (207 bar)  |
| <b>Lubricants</b>   | All Oils, Grease up to NLGI #2  |
| <b>Cycling of Pump (max)</b>  | 60 actuations/min, **max w/oil<br>10 strokes/min, max w/grease                  |
| <b>Pump Output Per Stroke (Adj)</b>   | 0.500 to 1.000 in <sup>3</sup> (8.19 to 16.39 cm <sup>3</sup> )                 |
| <b>Net Weight (Approx)</b>  | 16 lb, 5 oz (7.39 kg)   |
| <b>*For higher output pressure, consult your authorized distributor or the factory.</b> |   |
| <b>**Dependent upon viscosity of oil</b>  |   |

| COMPONENT ORDERING                  |          |              |
|-------------------------------------|----------|--------------|
| Description                         | Part No. | Old Part No. |
| HLJ-100A Pump Assembly*             | 562856   | 141-000-101  |
| HLJ-100 Pump Spare Parts Kit        | 563910   | 560-001-260  |
| Blowout Disc Kits (6 discs per kit) |          |              |
| 1450 psi (Yellow) Disc Kit          | 563962   | 560-900-270  |
| 2050 psi (Orange) Disc Kit          | 563964   | 560-900-290  |
| 3250 psi (Purple) Disc Kit          | —        | 560-900-330  |

\*Standard equipment includes the 2050 psi rupture disc assembly. For higher psi applications (up to 3250 psi) replace with higher pressure rated disc.

See Graco Bulletin L15401 for complete information for available pressure relief devices.

For reservoir selection, refer to Modu-Flo Bulletin L12000. Note, reservoir outlet port (1/2 in NPSF) is used to connect reservoir to pump. For grease applications, this supply line should not exceed 12 in length, or be smaller than 1/2 in O.D. tubing.

All written and visual data contained in this document are based on the latest product information available at the time of publication. Graco reserves the right to make changes at any time without notice.

## Contact us today!

To receive product information or talk with a Graco representative, call 800-533-9655 or visit us online at [www.graco.com](http://www.graco.com).

