

Automatic Lubrication for the Plastic Industry

Recent studies show that more than \$600 billion per year is spent by general industry on repairing damage caused by wear. Better maintenance and lubrication are keys to reducing such operating costs. Trabon Series Progressive Systems are the best way to lubricate Injection Molding Machines:

- **A properly designed Trabon System maintains consistent lubricant film thickness**
 - ✓ Allows the fastest possible cycle speed
 - ✓ Provides continuous, smooth operation for long periods of time
 - ✓ Extends machine life span
 - Ball Screw, Toggle Links
 - ✓ Lube volume is calculated for your machines actual lube requirement

- **Trabon System diagnostic detection provides electronic feedback to operator and/or system PLC**
 - ✓ Reduces component failures
 - ✓ Keeps production running
 - ✓ Reduces downtime and major failures
 - Extends mean time between failures on equipment

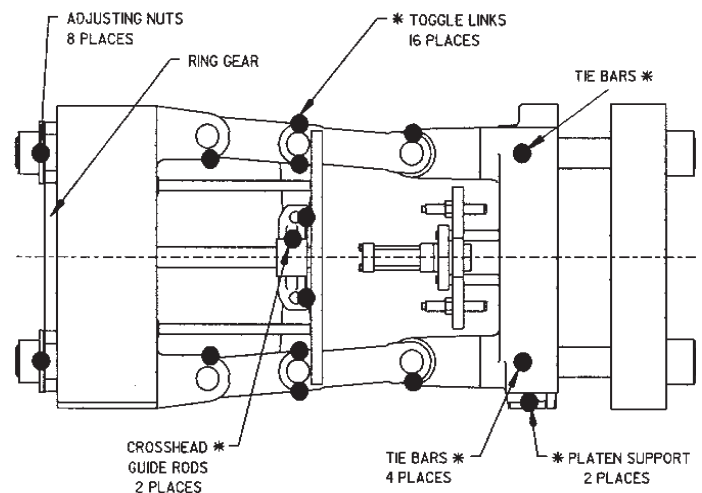
- **Overhead expenses are minimized with Trabon Centralized Lubrication Systems**
 - ✓ Reduces maintenance labor costs for manual lubrication
 - ✓ Reduces energy costs up to 20%
 - ✓ Lowers lubricant consumption up to 50% as compared to manual lubrication



Injection Molding Machine with Trabon E-Series Pump

The most common components to be lubricated on Injection Molding Machines Include:

- Tie Rods
- Moving Platen
- Ring Gear
- Cross Heads
- Ball Screws
- Toggle Links
 - Guide Rods
- Platen Support
- Adjusting Nuts
- Clamps



Van Dorn Demag Toggle Machine

Series Progressive Divider Valves

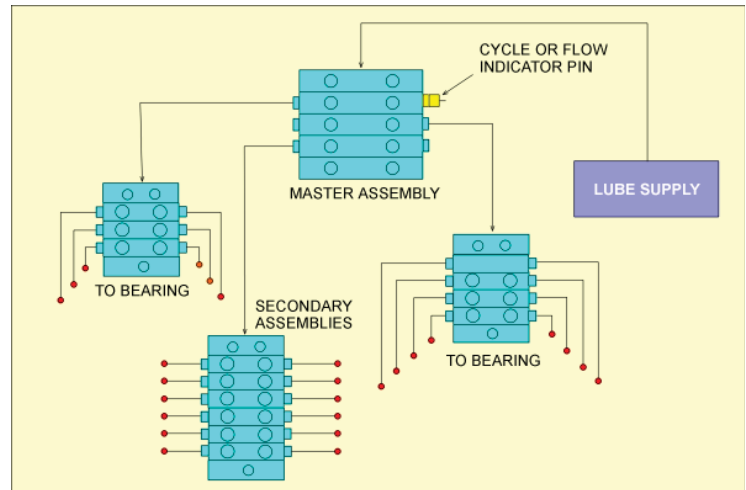


MSP Series Divider Valves

Trabon divider valves accurately distribute lubricant to multiple lube points. They are designed to accept a variety of accessories which facilitate troubleshooting and system control using electronic timers, counters and monitors.

For over 70 years, Trabon series progressive, self-monitoring systems have set the standard for automatic oil or grease lubrication of nearly every type of machine. The heart of a series progressive system is the divider valve:

- Which provides a positive indication of metered lubricant flow, creating user confidence
- Lubricant cannot bypass blocked lines or escape broken lines without generating feedback
- A unique progressive circuit design requires each valve piston to complete its stroke before the next downstream piston is activated
- Blockage anywhere in the system transmits a detectible high-pressure signal all the way back to the pump
- Broken line monitors detect line pressure drops
- Indicators can be provided to isolate problems to a particular line



Lubriquip's Distributor Network provides the industry's best field support:

- With over 100 distributors worldwide for local support & service
- Factory-trained technical sales force and application engineering staff to support your needs
 - System Design
 - Installation
 - Troubleshooting
 - Service / Maintenance

ISO 9001 Registered Firm
ISO 14000 Registered Firm

All written and visual data contained in this document are based on the latest product information available at the time of publication. Graco reserves the right to make changes at any time without notice.

Call today for product information or to request a demonstration.

1.800.U.S.A.LUBE (1-800-872-5823) or visit us at www.lubriquip.graco.com.



All other brand names or marks are used for identification purposes and are trademarks of their respective owners.